

Hello KaroroCAD users,

Welcome to the 1st of October 2024 update from us here at KaroroCAD HQ.

WING and KITE - more ghosts available in compare menu

We have added 2 more ghosts into the compare menu, given a total of 5:


Ghost 4 Opacity % (0 to 100):

Open Ghost 4


File:

- SHOW GHOST 4
- LE REF GHOST 4

Ghost 4 Colour:



Change Ghost 4 Colour


Ghost 4 Opacity % (0 to 100): 

Open Ghost 5


File:

- SHOW GHOST 5
- LE REF GHOST 5

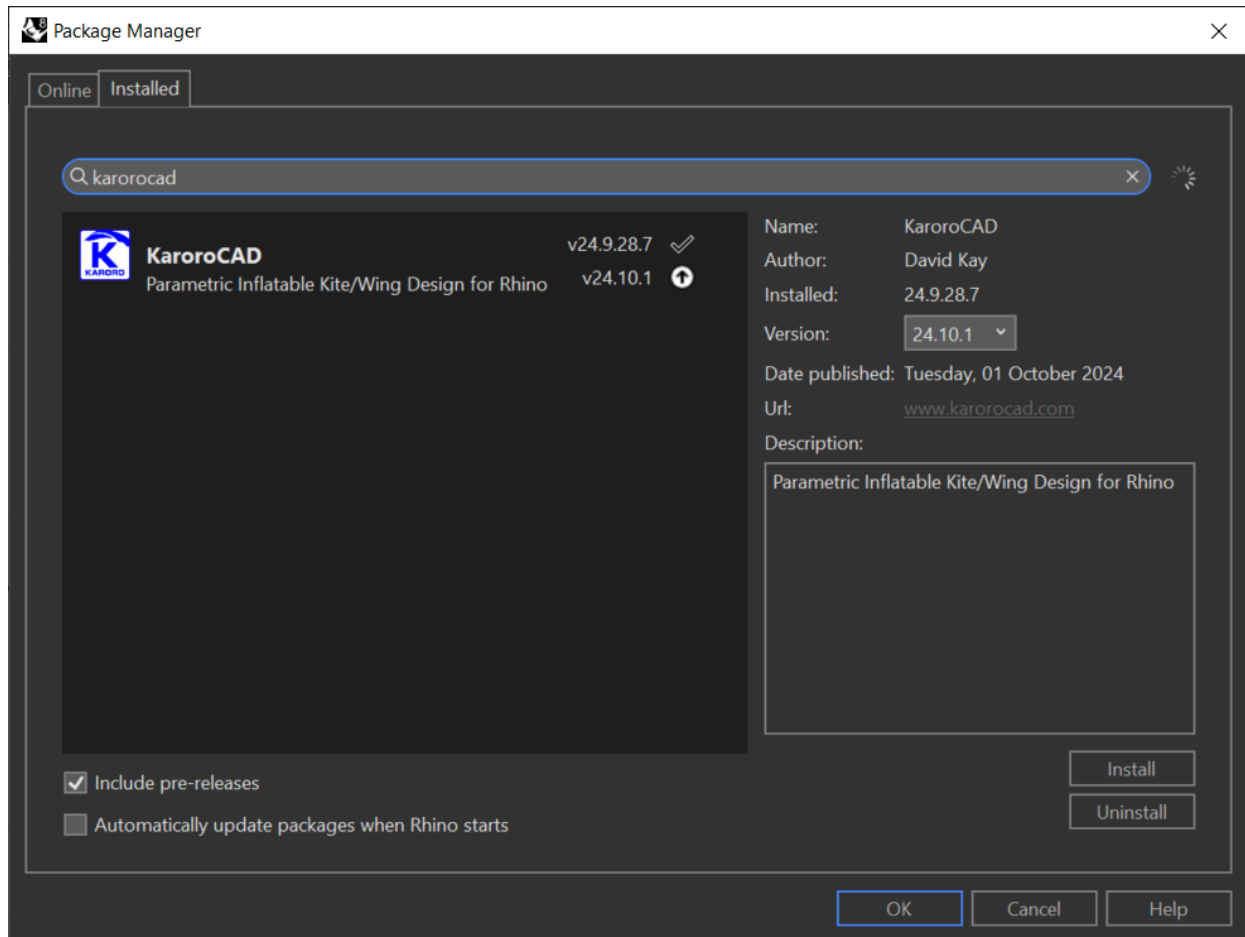
Ghost 5 Colour:



Change Ghost 5 Colour

Ghost 5 Opacity % (0 to 100): 

For easy install and updates, KaroroCAD is now on the Rhino Package Manager:



To access the latest update just type "Package Manager" in the Rhino command line and search "Karorocad".

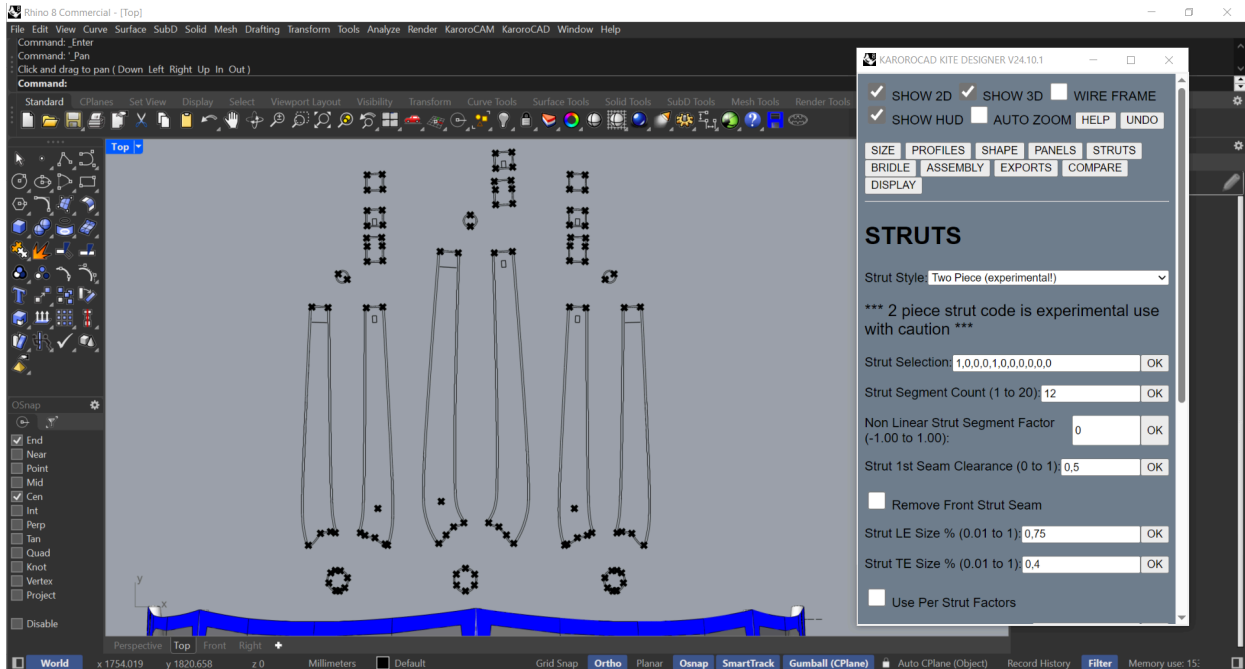
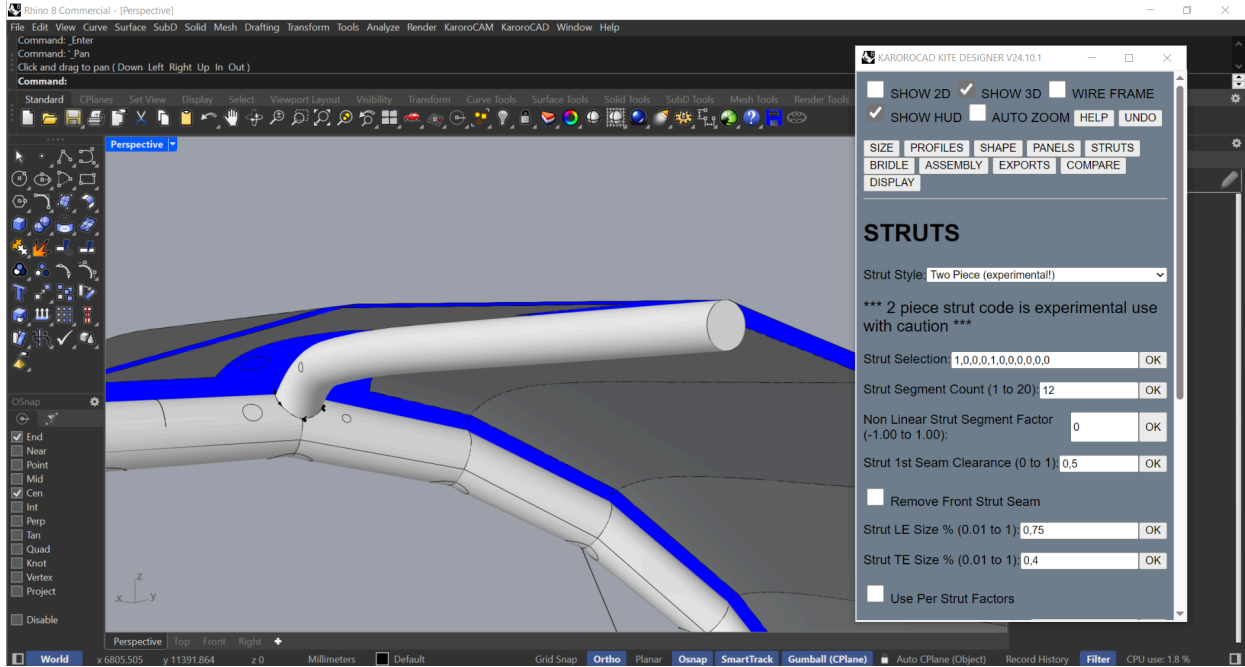
Please note that as part of this change we have updated our license control system - your current user key will not be valid with the latest update. Please contact us directly if you are needing an updated user key and have not received one yet.

For more details please see this video:

<https://youtu.be/AqDkRCuQUGE?si=MUN7hkfu2o1joLxh>

KITE - Two Piece Curved Struts

A very exciting new development with KaroroKITE - we have released a beta test of a two piece curved struts:



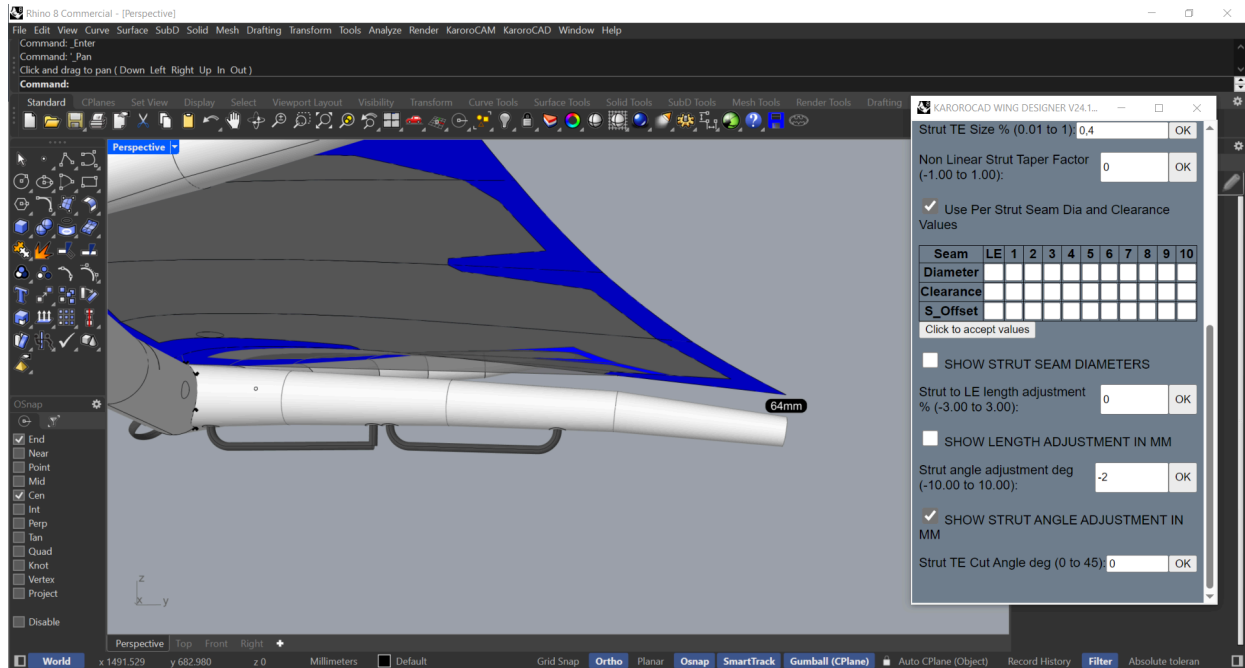
Please consider this "experimental" for the time being as we need to get some struts built and verified before we can recommend for production use. However we would be keen for you to test and come back with feedback.

For more details please see this video:

https://youtu.be/DttxyQzt-Q?si=YpArz4IS9QoK_QwE

WING - Added Strut Angle Control

Added to help in fitting and canopy tension, there is now a tool in KaroroWING to adjust the angle of the Strut on the Leading Edge and measure its offset from the design position:



This is independent of the canopy - which remains at 0 deg AOA.

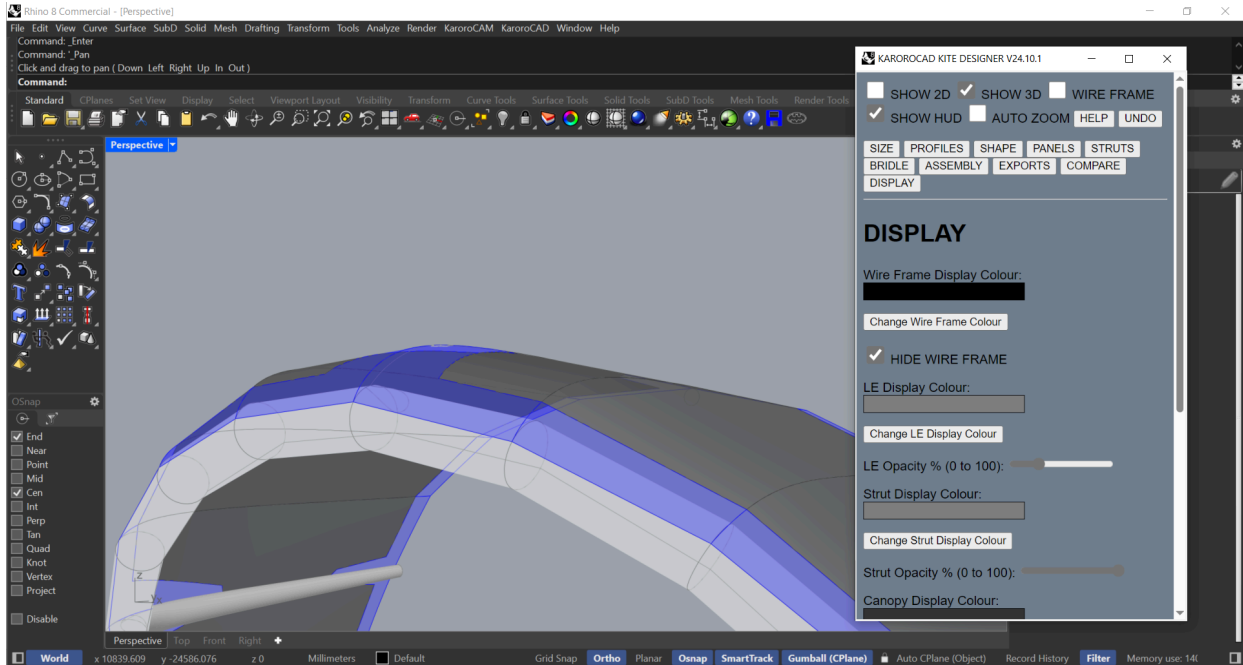
This can be a useful tool to match material properties to the wing design for better canopy tension.

WING and KITE - Added Opacity control to all items in Display Menu

Until this point there have been no controls over the Opacity of the kite/wing parts in the KaroroCAD display.

The canopy was factory set to 80% with the rest of the items at 100% Opaque.

There is now full control over this on all items - making it easier to focus on particular features when required:



Misc and Bug Fixes

- Corrected order of details in Main and Bridle HUDs
- Fixed math of 3pt Bridle with Tow Point pulley to match other Tow Point Pulley options
- Fixed issue with incorrect wing tip panel size in Rhino 8
- Change license system
- Fixed missing 7 point hybrid bridle with wing tip pulley
- Improved strut valve location code
- Fixed Wing handles showing as rendered in the wire frame display mode
- Fixed Handle curves showing with 3D view turned off

Finally, we were asked recently about the recommended export procedure for the 2D files. We have created this video as a guide to the process:

https://youtu.be/ebP6Af6fKBE?si=lxuteQ5_MBzoGQ5_

As always please check the HELP for any questions you may have and let us know if there is anything we need to add.

Thank again for all your feedback and support - more updates next month

--

Best Regards,

Dave Kay (DK)

Product & Software Engineer

RAD SKY DEVELOPMENT - www.karoroCAD.com

Mobile: +27 710178094

Skype: kiteboardshaper